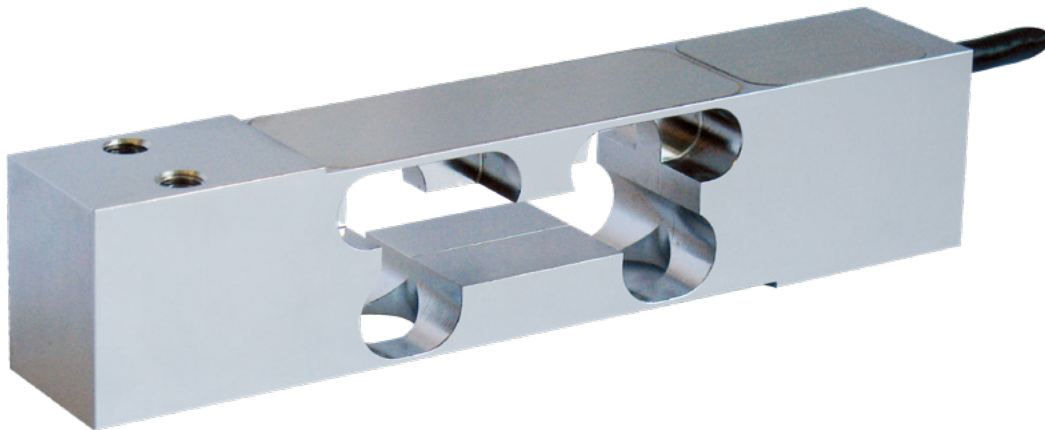


Single Point Load Cell AXL with a Rated Load of 10 ... 75 kg



Performance Features

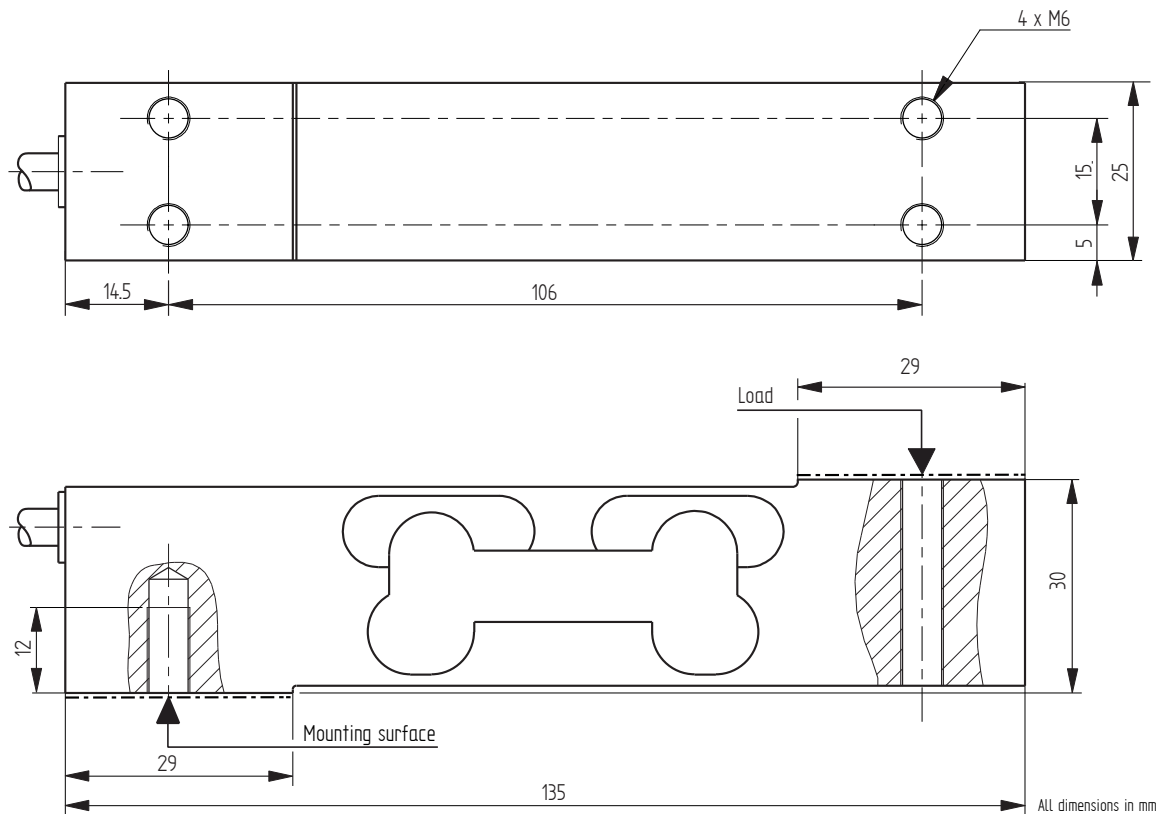
- Stainless steel single point load cell
- 3000d OIML R60
- Level of protection: IP68
- Designed for platforms of maximum dimensions 400 mm x 400 mm (off-center load compensate)
- Ideally suited for single point scales in humid and corrosive environments
- Patented design to combine high accuracy and high environmental protection level
- ATEX 2014/34/EU version for hazardous area (option)

Application

- Food industry
- Chemical/pharmaceutical industry
- Dosing equipment in humid and corrosive environments



Dimensions in mm



Article-No.	Version	Rated Load [kg]
112600	C3 5e	10
112601	C3 15e	15
112602	C3 10e	20
112603	C3 10e	50
112604	C3 15e	75

Connection Assignment

Electrical Connection		
Function	Wire Color	
Excitation (+)	Brown	●
Signal (+)	Yellow	●
Signal (-)	White	○
Excitation (-)	Green	●
Sensing (+)	Gray	●
Sensing (-)	Pink	●

Technical Data

Type	AXL			
Version		C3 5e	C3 10e	C3 15e
Rated load E	kg	10	20; 50	15; 75
Maximum load for approved weighing E_{max}	kg	10	20; 50	15; 75
Accuracy class OIML R60		C3	C3	C3
Maximum numbers of load cell intervals n_{max}	d OIML	3000	3000	3000
Minimum verification interval v_{min}	g	2	2; 5	1; 5
Creep division factor $Z = E_{max}/2 \times DR$		3000	3000	3000
Combined error	% E	±0.017	±0.017	±0.017
Temperature coefficient of zero signal	% E/°C	±0.0028	±0.0014	±0.0009
Temperature coefficient of characteristic value	% E/°C	±0.0014	±0.0014	±0.0014
Load creep d_{cr, F} in 30 min.	% E	±0.025	±0.025	±0.025
Zero balance	% E	±10		
Rated output at E C_{nom}	mV/V	2 ±10 %		
Rated range of excitation voltage B_{U, nom}	V	1 ... 15		
Input resistance R_e	Ω	385 ±20		
Output resistance R_a	Ω	350 ±5		
Insulation resistance R_{is}	MΩ/50V	5000		
Electrical connection		Cable, PVC, 3 m		
Rated temperature range B_{T, nom}	°C	-10 ... 40		
Operating temperature range B_{T, G}	°C	-20 ... 60		
Limit load E_{lim}	% E _{max}	150		
Breaking load E_b	% E _{max}	200		
Tightening torque	Nm	15		
Maximum platform dimension	mm	400 x 400		
Level of protection		IP68		
Material		Stainless Steel		
Weight	kg	0.7		

Options

Article-No.	Description
111735	Protective coating
107798	ATEX 2014/34/EU, IECEx: ex II 1 G/D, Ex ia IIC T6 Ga, Ex ia IIIC T80 °C Da, IP6X, -20 °C < Ta < +60 °C (zones gaz 0/1/2, dust 20/21/22)
115049	ATEX 2014/34/EU, IECEx: ex II 1 D, Ex ta IIIC T125 °C Da, IP6X, -20 °C < Ta < +60 °C (zones dust 20/21/22)
115048	ATEX 2014/34/EU, IECEx: ex II 3 G, Ex nA IIC T6 Gc, -20 °C < Ta < +60 °C (zone gaz 2)

Accessories

Electrical Connection

Article-No.	Description
10323	Male cable connector KS6 (6-pin, Series 581) incl. mounting
10320	Male cable connector KSSH15 (15-pin) incl. mounting
43418	Input connector ZA9612FS (ALMEMO) incl. sensor mounting and connector calibration
49205	Input connector ZKD712FS (ALMEMO 202) incl. sensor mounting and connector calibration

Accessories (continued)

Weighing Electronics

ALCJB-A	CPJ/CPJ2S	IPE50 Panel
 The image shows a white plastic terminal block with a central grey cover. The cover is partially open, revealing two rows of green terminal pins. The block has a total of eight terminals.	 The image shows a green plastic terminal block with a vertical orientation. It has a single row of terminals and a small black label with the letters 'CPJ' on the front.	 The image shows a black and blue electronic panel. It features a red LED display showing '30.000'. Below the display are several buttons and a small keypad. The panel is labeled 'IPE50'.

Further suitable accessories you can find on our homepage under:

https://www.lorenz-messtechnik.de/english/products/lc_weighing-electronics.php